



BEYOND 2025

SOUTHLAND

Regional Long Term Plan

He ara whakamua, he ara hou a Murihiku i tēnei ao hurihuri

Moving forward, new pathways for Southland Murihiku in a constantly changing world

What is Beyond 2025 Southland?

Beyond 2025 Southland is our region’s long term plan that will be presented in June 2023.

- This piece of work had a dual purpose as:
- a. a workstream within Southland’s Just Transition Work Plan, providing a long term lens over the other workstreams and;
 - b. an update to the Southland Regional Development Strategy 2015 - 2025 (SoRDS).

Southland Just Transition

The Southland Just Transition process is supported by an active partnership between iwi, local government, communities, business, unions, education, and central government (MBIE). The overall Southland Just Transition project goal is:

“Help Southland build its economic, environmental and social resilience through and beyond the planned closure of the New Zealand Aluminium Smelter in December 2024”.

To oversee the Southland Just Transition, an Enduring Oversight Group (EOG) and associated Secretariat group were established and in February 2022 Southland’s Just Transition Work Plan was launched. Within the work plan are seven pou (workstreams) which Southlanders have made clear will make a meaningful difference to the future of Southland Murihiku: Clean Energy, Aquaculture, Land Use, Worker Transitions, Community Capability Building, Business Transitions and Long-term Planning (Beyond 2025 Southland).

Southland Regional Development Strategy 2015 – 2025 (SoRDS)

SoRDS was launched in 2015 and had one big goal to achieve 10,000 more people by 2025. Even with an unforeseen pandemic to contend with, we’re tracking well to achieving this population goal. Building on this work Beyond 2025 Southland will focus on retaining those people and attracting skilled workforce considering our aging population and current low unemployment.

While SoRDS had one big goal, it identified 51 actions and to date two thirds of these have been completed or are underway.

What is Beyond 2025 Southland’s purpose?

The purpose of the plan is to create a shared future vision and pathway for Southland Murihiku beyond 2025. It is based on whakamana, empowerment, and aspirations we’ve identified for our people, environment and economy. We can only achieve the shared vision when all moving parts come together, therefore our focus has been on identifying projects which embrace change and build resilience and capability for our people.



Tū tahi ki te Kei
Lets all stand together in the stern of our waka

He ara whakamua, he ara hou a Murihiku i tēnei ao hurihuri

Moving forward, new pathways for Southland Murihiku in a constantly changing world

Guiding Principles

As we've looked at how to achieve the vision through the development of this plan, we've been guided by five principles.

Te Tiriti o Waitangi

We honour the principles and spirit of the Treaty by working collaboratively with our Treaty partners to ensure aspirations for mana whenua and Māori are reflected.

Inclusivity

We've understood that the process to develop the plan is just as important as what the plan says. So, we've endeavoured to provide opportunities for many to be involved and share their views with significant surveying, research, hui and conversations over the past 18 months.

Equity

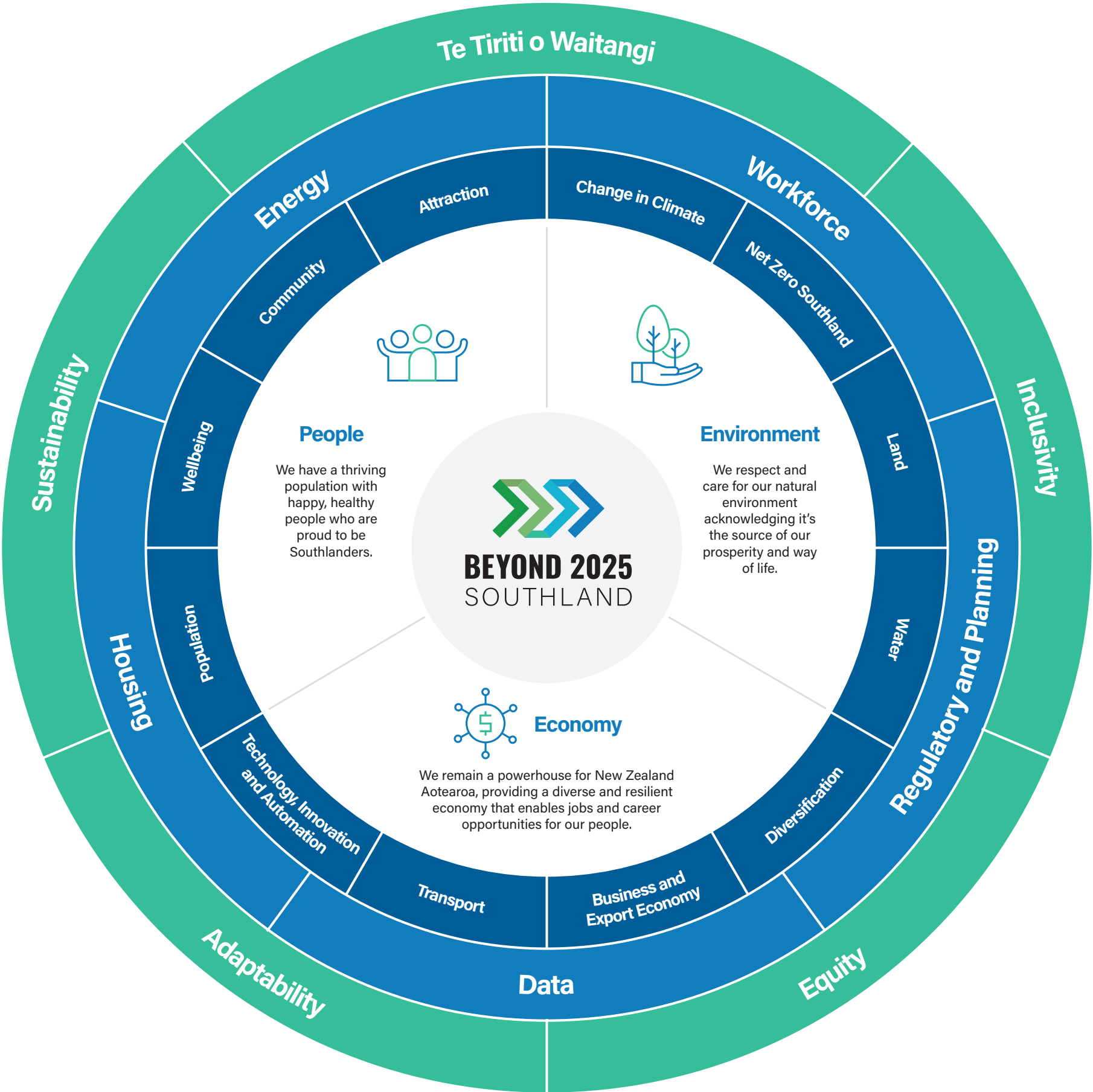
We've focussed on achieving equitable and fair outcomes, taking into account the needs and perspectives of all members of the community so that everyone, regardless of background or circumstance, have the opportunities to thrive.

Adaptability

We're acknowledging what we do (or don't do) now will affect the future so we need to ensure we are both resilient and adaptable in our approach. This way we can best respond to change and challenges considering things we can and cannot control.

Sustainability

We've focused on a sustainable long-term view for the region, ensuring there is balance between our people, our environment, and our economy now and for the future.



Key Enablers

Five key enablers have emerged as essential gamechangers. We need to prioritise and focus on these as they will allow other parts of the plan to happen.



Housing

We will support and enable the development of quality housing within the region to better meet the needs of our people.



Workforce

We will implement a joined-up approach to labour market planning so we all clearly understand what our skilled workforce shortages are now and into the future and how we will work collaboratively together to address them.



Data

We need access to timely, comprehensive, and accurate data to inform policy, assist decision-making, and prioritise resources for growth and development via collection, analysis, visualisation and data governance.



Energy

We will support the region's future energy needs in a clean and resilient way, while ensuring affordability for our communities and remaining globally competitive for new industry.



Regulatory and Planning

We want to align our regional development aspirations with the rules that dictate what we can and cannot do with our land, water and people, and we want rules that enable a prosperous and sustainable future for Southland Murihiku.

Acknowledgement

The process to develop the Beyond 2025 Southland plan has taken 18 months and has been supported by multi-stakeholders including partnerships with councils, mana whenua, the business sector, local community organisations and central government agencies.

The plan has been supported by MBIE and the Southland Just Transition Enduring Oversight Group (EOG).

Engagement by the numbers

Honouring our guiding principle Inclusivity the project team has provided extensive opportunities over the past 18 months for our people around the region to be involved and share their views for our pathway forward.

200+

Businesses from around the region directly consulted to gain insights on their challenges and opportunities

100+

Presentations to community groups, organisations, businesses, iwi and agencies around the region

20+

Hui with mana whenua representatives and maata waka to ensure Māori perspectives included

20+

Separate pieces of research facilitated as inputs into the process

16

Workstreams established to inform the plan

9

Public roadshow events held around the region

6+

Separate surveys to understand community views and gain insights on key topics

4

Advisory or working groups established to deliver specific outcomes identified in the workstreams

2

Existing regional strategies reviewed as part of this process

1

Website with general feedback form www.beyond2025southland.nz

Keen to know more?

Online: Visit letstalk.icc.govt.nz/beyond-2025-southland (Online platform kindly hosted by ICC)

In person: Attend a drop-in session

Invercargill	Te Anau	Gore
Monday 29 th May 5.30pm	Tuesday 30 th May 5.30pm	Thursday 1 st June 5.30pm
Drawing Room, Civic Theatre	Hollyford Café, 63 Town Centre	Croydon Lodge

Southland Murihiku Regional Indicators

12% of New Zealand Aotearoa land mass (2nd largest region in New Zealand Aotearoa)

3,100 kilometres of coastline with 11 marine reserves and 2 marine sanctuaries

58% of land is public conservation estate, most of which is in two national parks; Fiordland National Park and Rakiura National Park.

5 of the 11 Great Walks (Kepler Track, Milford Track, Rakiura Track, Routeburn Track, and upcoming Hump Ridge Track)

The **southernmost International Dark Sky Sanctuary** in the world (Stewart Island Rakiura)

5,125,135 tCO₂e (9.2% of New Zealand Aotearoa net emissions)

Population of 102,400 people (2% of New Zealand Aotearoa)

\$7.3 billion GDP (2.0% of New Zealand Aotearoa)

\$72,200 GDP per person (4th highest region in New Zealand Aotearoa)

14,499 registered businesses (2.3% of New Zealand Aotearoa)

Top 5 Southland Murihiku industries by Employees are:

AGRICULTURE, FORESTRY & FISHING
9,630 employees
17.3% of economy

MANUFACTURING
8,240 employees
14.8% of economy

HEALTH CARE & SOCIAL ASSISTANCE
5,450 employees
9.8% of economy

RETAIL
5,100 employees
9.2% of economy

CONSTRUCTION
4,650 employees
8.4% of economy

Informetric 2023



Get in touch

info@beyond2025southland.nz

www.beyond2025southland.nz

letstalk.icc.govt.nz/beyond-2025-southland

Beyond 2025 Southland team



Bobbi Brown

PROJECT LEAD



Nic Wills

PROJECT ADVISOR



Becs Amundsen

PROJECT ADVISOR